
THE PERSPECTIVE

There are some things to consider while on the river, such as sharp rocks. Foot protection is a must. We recommend aqua shoes sold at area discount stores for about \$6.00 a pair, but an old pair of tennis shoes will do. We do not recommend any type of sandals.

ABSOLUTELY NO DOGS WILL BE ALLOWED.
We love their company, but they attract alligators.

Collecting fossils on or under State of Florida lands is governed by statute 240.516. Creation Explorations possesses the proper group permit to legally collect vertebrate fossils. All participants are required to abide by regulations set forth in this statute. The regulations are simple and we will discuss them before the float begins. In accordance with our permit, we must inspect and log your finds. Then you will take them home with you.

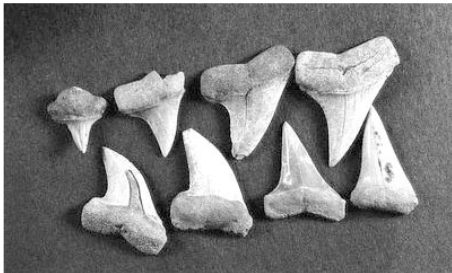
Reservations with Creation Explorations are required. Mail your registration form and payment to us. If you have further questions, contact us by e-mail, or we would be happy to talk to you by phone.

Paul & Brenda Schulze

pbschulze@juno.com

321.723.7429

www.CreationExplorations.com



**Creation
EXPLORATIONS**

451 Almansa N.E. • Palm Bay, FL 32907



Spring 2010
**FOSSIL
CAMPOUT**



April 16-18, 2010

Pioneer Park Campgrounds

Zolfo Springs, FL 33890

\$50.00 Per Person

Join Creation Explorations in Zolfo Springs for a weekend of fossil collecting, canoeing the Peace River, camping, fresh air, and fellowship. Paleontologists refer to this area of Florida as "Bone Valley" for the abundance and variety of fossils. Previous Creation Explorations finds include whale, alligator, deer, horse, stingray, dugong, and extinct species such as mammoth, mastodon, glyptodont, sloth, and saber tooth tiger. When this area was a sea, six species of shark swam here. Their fossilized teeth are so plentiful we guarantee you will find several.

**Creation
EXPLORATIONS**

Paul & Brenda Schulze

451 Almansa N.E. • Palm Bay, FL 32907

321.723.7429

www.CreationExplorations.com

SCHEDULE OF EVENTS

Friday

Meet us at Pioneer Park, located in Zolfo Springs, Florida at the intersection of 64 and US17. Look for the sign that says "Creation Explorations" and set up on a site nearby. There are no campsite reservations. The park management will stop by later to collect their fees. Primitive sites are \$10.00 per night per tent, while campsites with water and electricity are \$15.00 per tent or RV for two people. There is an additional \$2.00 charge for each person 10 and over. Friday evening we will get to know each other as we talk around the campfire.

Saturday

Saturday, the Schulze family will guide you as we canoe down the Peace River, stopping at various locations to collect fossils. Afterwards, we will review the day's fossil finds and fellowship around the campfire enjoying s'mores supplied by Paul and Brenda.

Sunday

Sunday morning we will conclude our weekend with an informal open air worship service and a brief devotional. After that, some may leave for home, while others may wish to enjoy a little more time on the river.



WHAT TO BRING

The following is a check list of what we suggest you take on the fossil campout, but add to it what you feel you may need.

Tent	Sleeping Bags
Swimsuit	Towels
Insect Repellent	Sunscreen
Flashlight	Aqua Shoes
Extra Batteries	Lawn Chairs
Medications	Cooler
Camera	Drinks
Jacket	Hat
Sunglasses	Ziplock Bags
Saturday Lunch	Food/Snacks

NO TENT, NO PROBLEM RENT ONE FROM US!

The Schulze's will set up and take down our tents for you. All tents are 12x10 foot or larger. The cost is \$25.00 per weekend. This price does not include the site fee payable to Pioneer Park.

Contact us at pbschulze@juno.com or call **321.723.7429** for reservations, clarifications or more information.

RESERVATION FORM

Name _____

Address _____

Phone _____ Cell _____

Email _____

Number of Adults _____ at \$50.00 each \$ _____

Names _____

Number of Children _____ at \$50.00 each \$ _____

Names & Ages _____

of Canoes _____ x \$40.00 each \$ _____

(or bring your own canoe or kayak)

of Tents _____ x \$25.00 each \$ _____

Overall Grand Total \$ _____

(Please check date) April 16-18, 2010

Please Note: A **Liability Waiver** must be signed. Go to our web site, www.CreationExplorations.com, and print one out to send with your registration. Thank you!

To contact us via email: pbschulze@juno.com

Please send payments to:

Paul Schulze
451 Almansa St. N.E.
Palm Bay, FL 32907

Do not send payments for campsites or hotel rooms to us. Pay Pioneer Park or motel directly.

If Camping is not your thing, these local Motels are available:

Best Western Heritage Inn (863) 773-2387

Colonial Arms (863) 773-9758

Tropicanna Motel (863) 773-3158